

Site Layout



Professional Team



DEVELOPERS
Brompton Homes Ltd.,
Unit 2, Brompton House,
The Cloisters, Ballincollig,
Co.Cork.

T: 021 487 2567 F: 021 487 6207

SOLICITORS
Doody & Co. Solicitors,
21, South Mall, Cork.

T: 021 427 0053

ARCHITECTS
SDA O'Flynn,
Lough Mahon House,
Skehard Road, Mahon,
Cork.

T: 021 4972060

ENGINEERS
David Kelly Partnership,
Nelson House, Emmet Place,
Youghal, Co. Cork

T: 024 92412

JOINT AGENTS



Sherry FitzGerald Hennessy,
85 North Main St,
Youghal, Co. Cork

T: 024 92595



Bernard A. Leach & Associates,
Brompton House, The Cloisters,
Ballincollig, Co. Cork.

T: 021 487 2567 F: 021 487 6207

The particulars in this brochure are for guidance only and do not form part of any contract. Whilst care has been taken in preparation, we do not take responsibility for any inaccuracies. Drawings are not to scale.



CHICKLEYS ROAD, YOUGHAL, CO. CORK.



Features

Elegant architectural design
10 year Homebond structural guarantee
Conventional concrete block cavity wall construction
PVC Double glazed windows
Luxury fitted kitchen
Gas central heating
Spacious main bedroom with electric shower ensuite
Insulated to highest modern standards
Fitted wardrobes to two bedrooms
Choice of coloured bathroom suites
Teak stairs complete with newel posts and spindles
Feature fitted fireplace
PVC Fascia & soffit
Wired for TV and telephone
Hardwood double glazed external door
Double glazed sliding aluminium door
Panelled doors, moulded skirting and architrave
Decorated throughout
Front lawn landscaped
Low maintenance exterior with quality brickwork facade
Concrete footpaths and driveway
Freehold title
Wired for alarm



FREE

CARPETS

COOKER

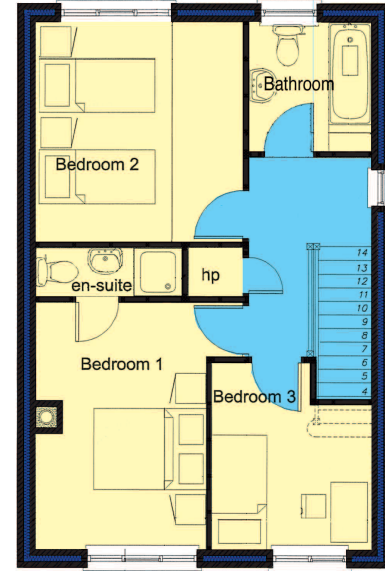
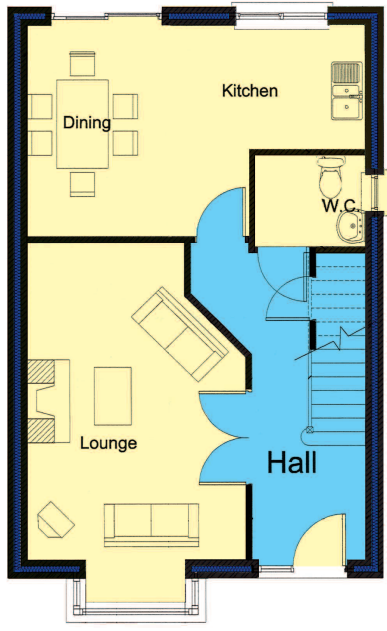
WASHING MACHINE

&

FRIDGE

House A

Total Area - 98.90 m²



House Type A - Ground Floor

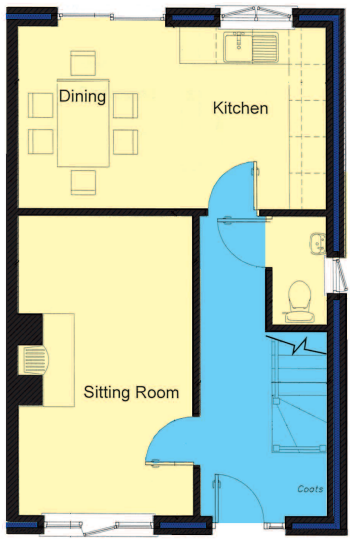
Lounge: 5.200m x 3.550m
 Kitchen/Dining: 5.500m x 3.450m
 Bathroom: 1.800m x 1.500m

House Type A - First Floor

Bedroom 1: 4.100m x 2.800m
 En-suite: 2.400m x 0.805m
 Bedroom 2: 3.650m x 3.400m
 Bedroom 3: 3.100m x 2.600m
 Bathroom: 2.150m x 2.000m

House B

Total Area - 82.44 m²



House Type B - Ground Floor

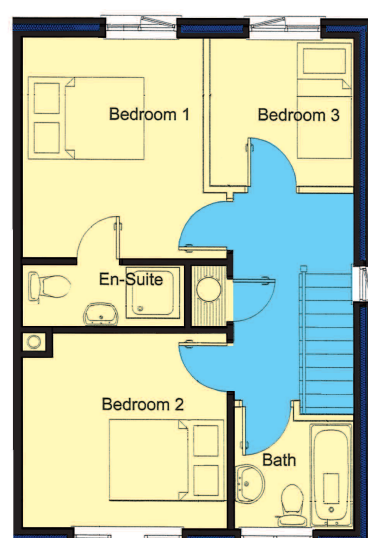
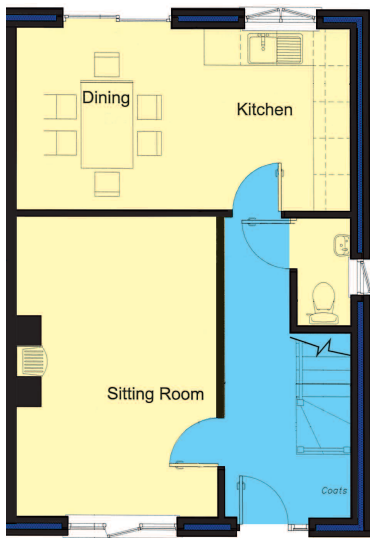
Sitting Room: 5.000m x 2.900m
 Kitchen/Dining: 5.090m x 3.000m
 Bathroom: 1.800m x 0.900m

House Type B - First Floor

Bedroom 1: 3.200m x 2.990m
 En-suite: 2.250m x 1.026m
 Bedroom 2: 3.650m x 2.590m
 Bedroom 3: 2.450m x 2.400m
 Bathroom: 2.000m x 1.800m

House C

Total Area - 89.34 m²



House Type C - Ground Floor

Sitting Room: 5.000m x 3.310m
 Kitchen/Dining: 3.000m x 5.500m
 Bathroom: 1.800m x 0.900m

House Type C - First Floor

Bedroom 1: 3.650m x 3.000m
 En-suite: 1.026m x 2.250m
 Bedroom 2: 3.200m x 3.400m
 Bedroom 3: 2.450m x 2.400m
 Bathroom: 1.800m x 2.000m